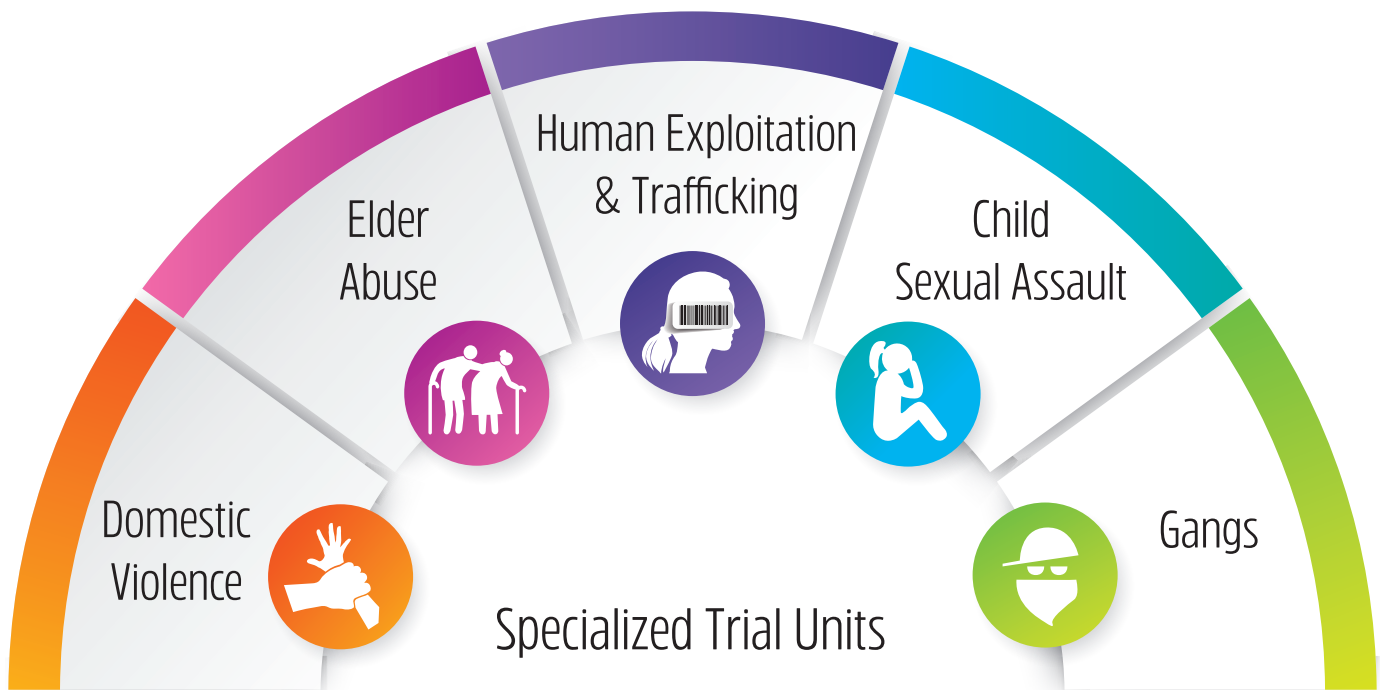


# Specialized Trial Units



**Our specialized trial units are committed to seeking justice for victims without further traumatizing them as the case winds its way through the criminal justice system.**

In order to best serve vulnerable victims, the Alameda County DA's Office has created specialized trial units. These units vertically prosecute domestic violence, elder abuse, gang, human exploitation and trafficking, and child sexual assault cases.



## A TEAM APPROACH

The vertical prosecution model affords victims and witnesses of these extremely traumatic and life-changing crimes to have one attorney, one inspector, and one victim-witness advocate working with them on their case. This unified team helps build rapport with the victim and witnesses, and ensures they do not have to retell their stories to multiple prosecutors and inspectors as the cases move through the system. It also enables these specialized units to address the special challenges facing these individuals, such as issues relating to protection and relocation.

## A TRACK RECORD OF SUCCESS

As these cases are vertically handled, the Alameda County District Attorney's office has experienced a long-running track record of success that has held the defendants of these crimes accountable for their actions. This means significant prison terms for the most serious violent offenders and referral to appropriate services for offenders believed to be amenable to change.

